

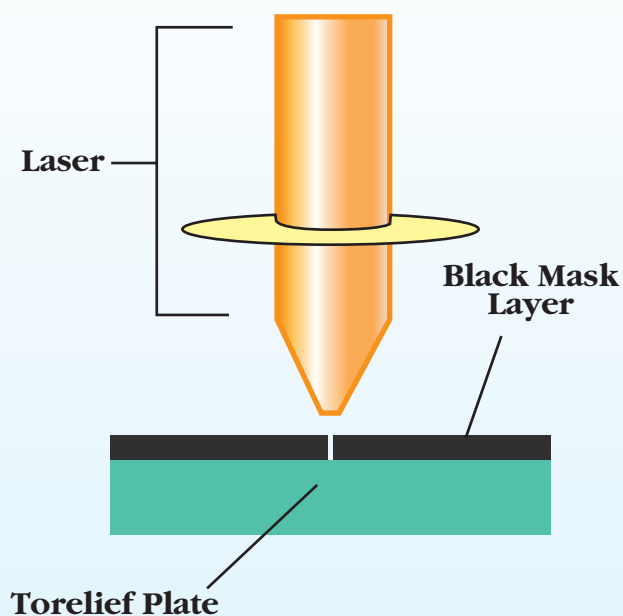
High Quality
Quick Plate Making

TORELIEF® CTP LETTERPRESS PLATE

Cost Effectiveness
Environmentally Friendly

Laser Ablation Mask System CTP

The next generation of TORELIEF Photopolymer plate technology has been incorporated into the Toray family of digital letterpress plates. The perfect combination of "CTP Technology" and "TORAY Highpolymer Technology" enables TORELIEF CTP to achieve the highest quality print.



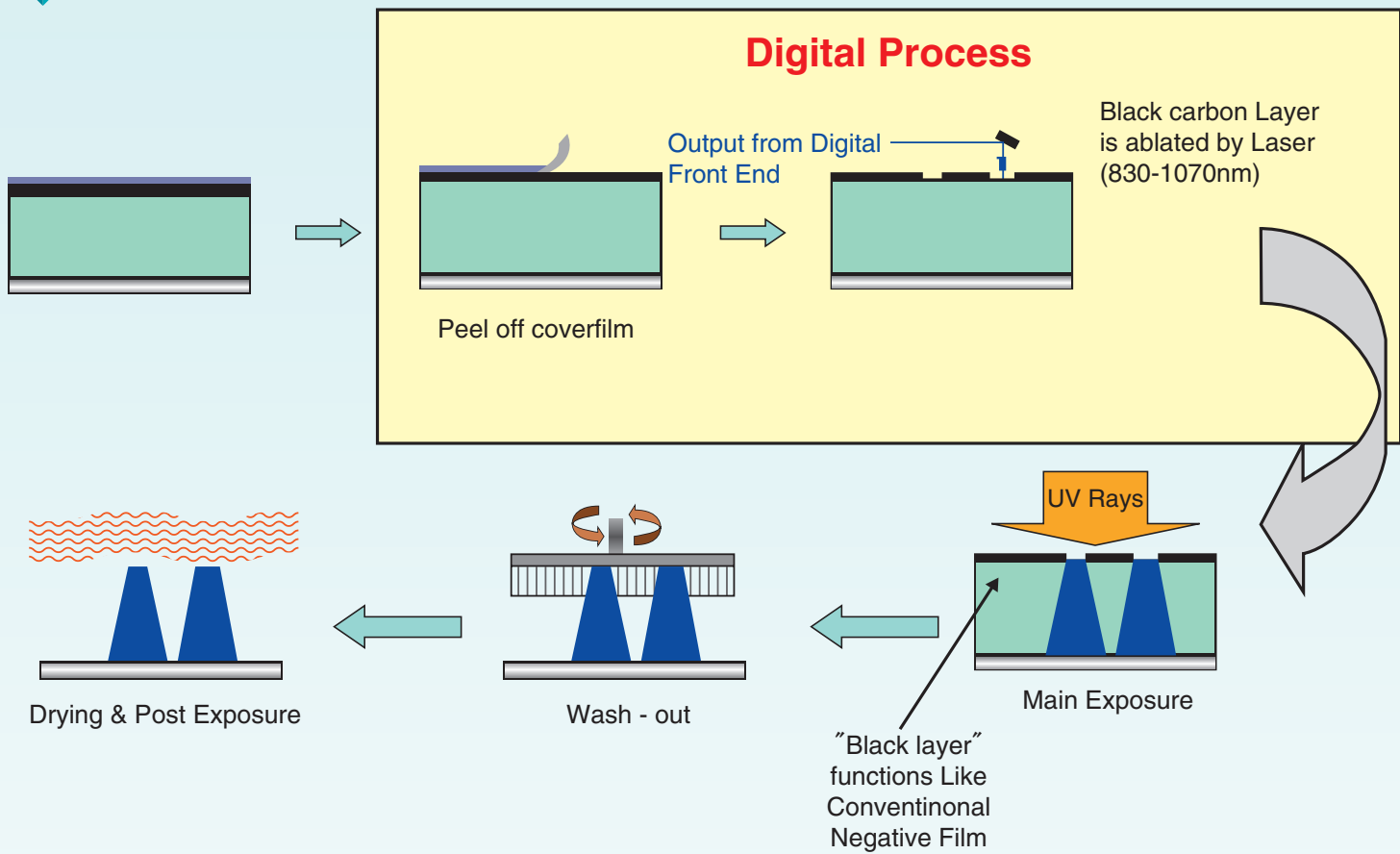
Major Characteristics :

- 1) Very fast imaging speed
-Highly Sensitive Laser Ablative Mask-
- 2) Sharper Relief Reproduction
-Highly Transparent Polymer-
- 3) Excellent Reproduction in Highlight Dot
-Self-Reactive Polymer-
- 4) Deeper Reverse Image
-Wider Exposure Latitude-

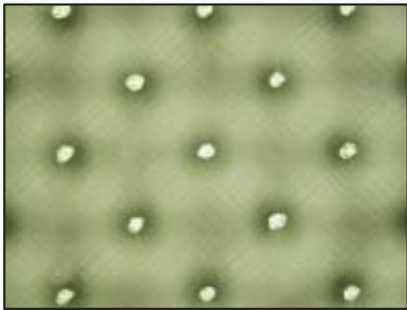
Specifications:

	DWF 80	DWF 95	DWS 73	DWS 83	DWS 95	DWS 73F
Total thickness	0.80(0.031)	0.95(0.037)	0.73(0.029)	0.83(0.033)	0.95(0.037)	0.73(0.029)
Relief depth	0.50(0.020)	0.65(0.026)	0.46(0.018)	0.56(0.022)	0.68(0.027)	0.56(0.022)
Base	Polyester film		Steel (0.25mm/0.01inch)			(0.15mm / 0.007inch)
Hardness	Shore D 55°		Shore D 65°			
Wash- out	Water/by Brush					
Usable Laser	Fiber Lasers,IR Laser/Wavelength=830-1070nm					
[Image Reproduction]						
Screen Range	1% ~ 98% at 200L/inch					
Minimum Dot Size	φ 100 μ m(0.004)					
Minimum Fine Line	20 μ (0.008)width					
Reverse image in 300μmwidth	100 μ m(0.040)					
Reverse image in 100μm width	40 μ m(0.016)					

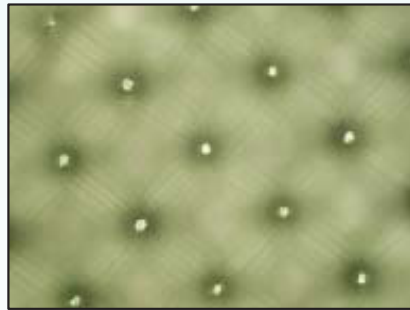
◆ TORELIEF Digital Plate Making Process



Picture of 3% dot at 175 lpi:

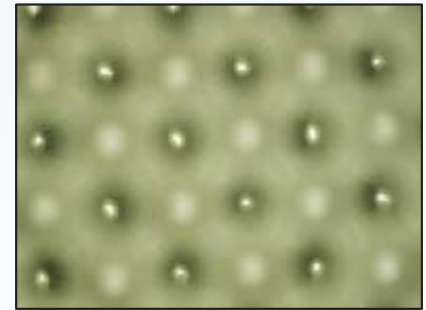


Analogue 3% 175 lpi
WF80DY3:26 μ m



Analogue 1% 175 lpi
WF80DY3:14 μ m

CTP
⇒



Digital 3% 175 lpi
DWF80:12 μ m

TORAY

Innovation by Chemistry

Toray Industries, Inc
Graphic Systems Department
8 - 1, Mihama, 1 - chome, Urayasu,
Chiba 279 - 8555 JAPAN
Tel : +81-(0)47-350-6049
Fax : +81-(0)47-350-6071

Distributed by :